



ZB MED – Information Center Life Sciences

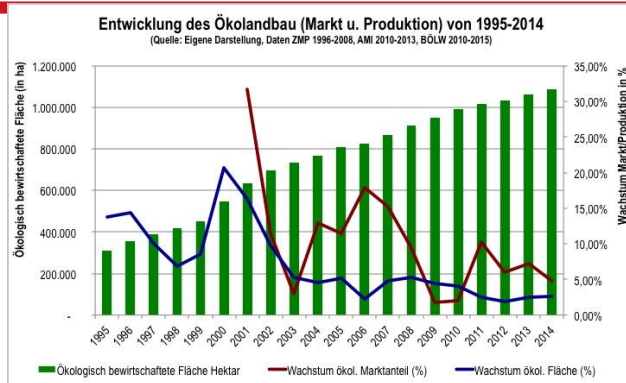
*Publishing of agricultural research data as kind of data sharing -
publication process in the Life Sciences Repository*

ZB MED – Information Center Life Sciences

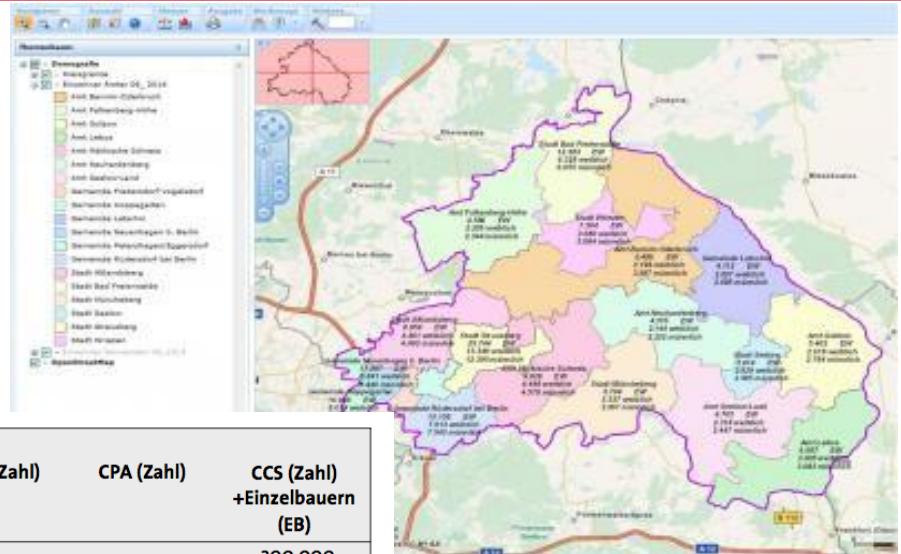
- ▶ Service provider for scientific information and life science research (German National Library for Medicine, Health, Nutrition, Environment and Agriculture)
- ▶ Largest library for information and literature in the fields of medicine, health care, nutritional, environmental and agricultural sciences – including the relevant basic sciences and related subject areas- worldwide
- ▶ ZB MED is committed to the concept of Open Access (OA) and Open Data and provides comprehensive support in this area.
- ▶ Foundation also carries out research and development projects in the field of information science to support the services.



Research data in agriculture

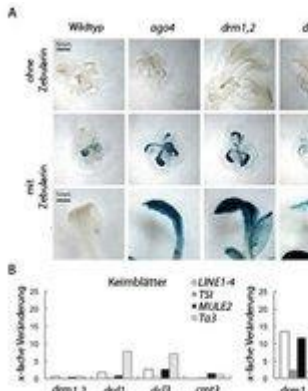


<https://slakner.wordpress.com/tag/agrarpolitik/>

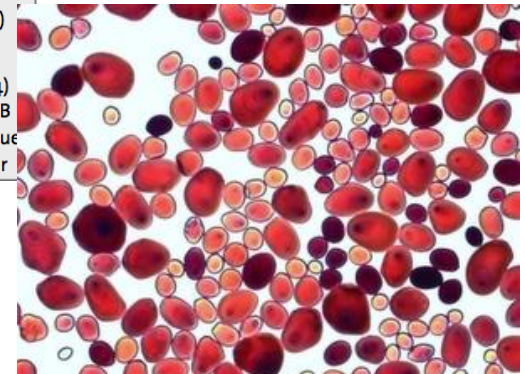


Jahr	Staatlich	Nichtstaatlich davon:	UBPC (Zahl)	CPA (Zahl)	CCS (Zahl) +Einzelbauern (EB)
1960	40	60	-	-	-200.000
1963	70	30	-	-	-
1980	75	25	-	14,1 (1.035)	10,9 (2.181)
1997	32,8	67,2	42,0 (2.550)	9,4 (1.147)	11,9 (2.780)
2007	35,8	64,2	36,9	8,8	18,5
2011*	17,0	83,0	23,0 (2.380)	9,0 (1.006)	51,0 (2.644) +50.000 EB +173.000 neue Landnutzer

Quelle: Anuario Estadístico de Cuba, 2012; Dissertation des Autors, 1984; *Nova González (geschätzt)



http://www.mpi-pz.mpg.de/3558444/research_report_7841286?c=7933



<http://www.laborpraxis.vogel.de/wissenschaft-forschung/articles/105285/>

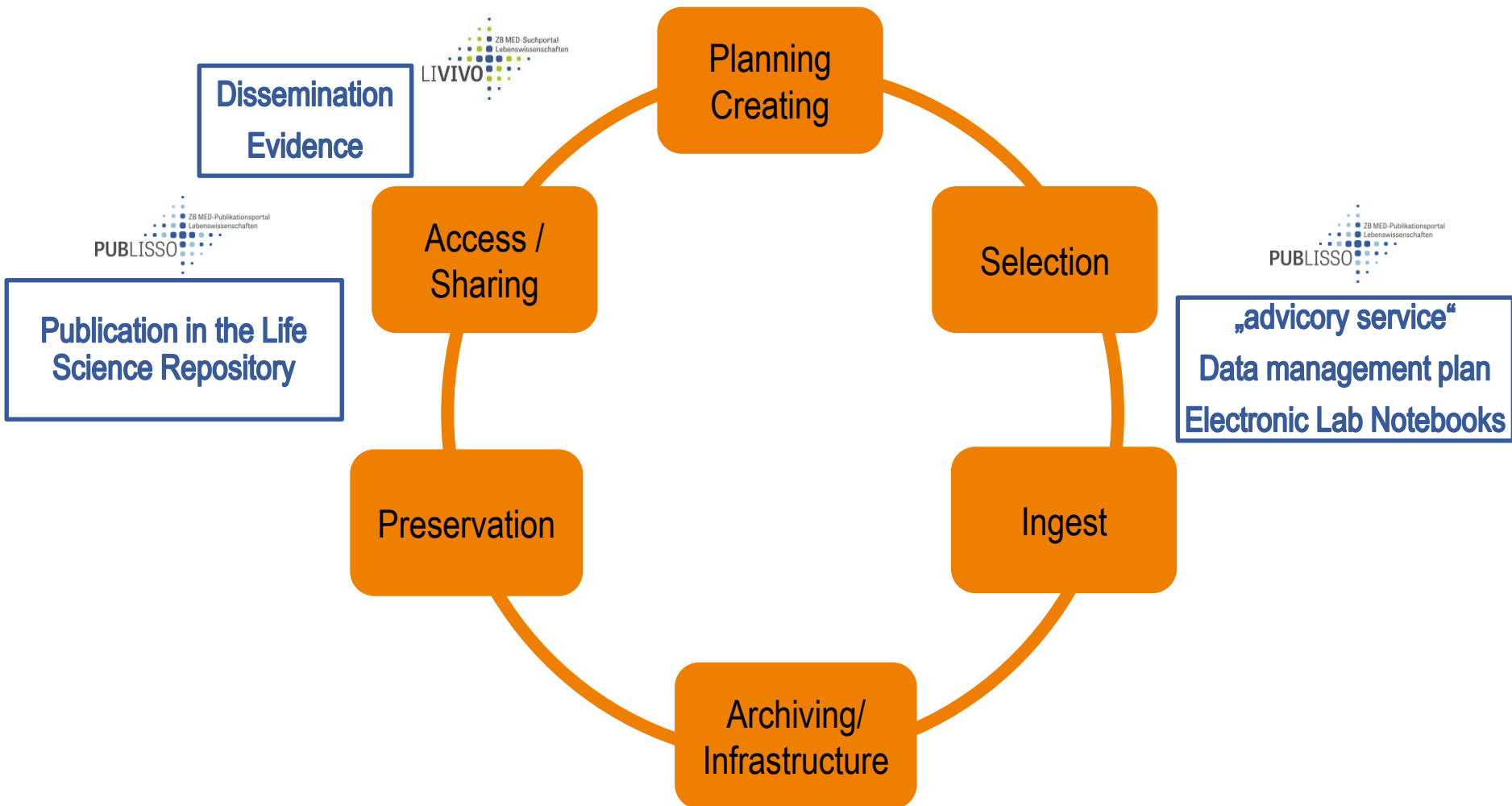
FAIR – principle for research data

- ▶ **F**indable (Persistent Identifier, rich metadata)
- ▶ **A**ccessible (retrievable by the Identifier)
- ▶ **I**nteroperable (applicable language, standardised vocabularies)
- ▶ **R**e-usable (clear data usage licence)

- ▶ Base of EU-Open-Data-Pilot, Horizon 2020

Research data life cycle

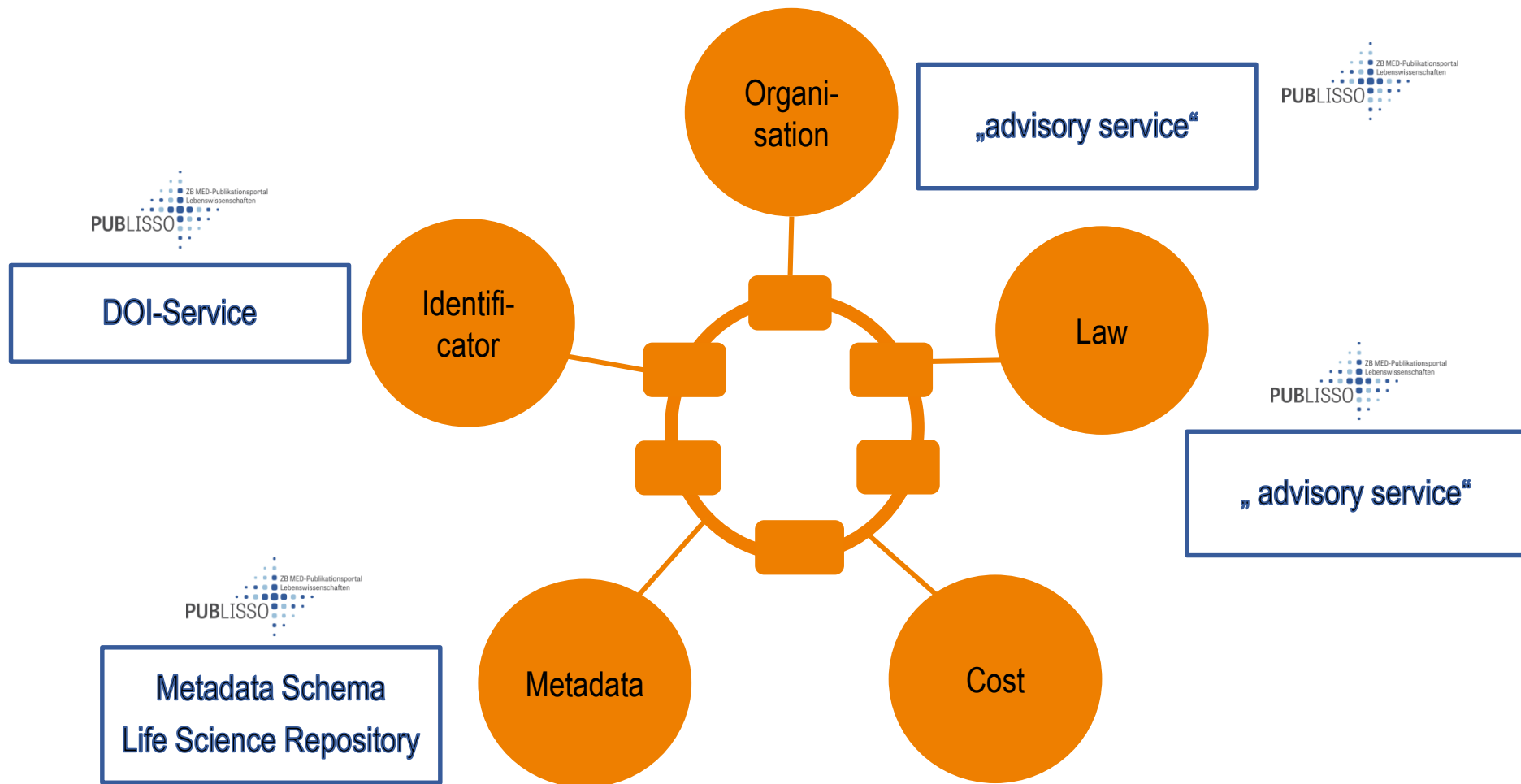
What can a information center for life science do?



source: Ludwig, J.; Enke, H. (publisher) (2013): Leitfaden zum Forschungsdaten-Management.

Further tasks accompanying Life Cycle for research data

What can an information center for life science do?




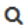
source: Ludwig, J.; Enke, H. (publisher) (2013): Leitfaden zum Forschungsdaten-Management.

Possibilities for publishing research data

- ▶ Generic or institutional (research data-) Repository
- ▶ Together with journal article / supplementary material
- ▶ Data paper in data journal
- ▶ specialist (research data-) Repository

Generic (research data-) Repository





[Upload](#)

[Communities](#)

[Log in](#)

[Sign up](#)

Recent uploads

August 24, 2017 (v2) Dataset Open Access

Aligned ISNI and Ringgold identifiers for institutions

Delpeuch, Antonin

This dataset provides a correspondence between ISNI and Ringgold identifiers, by combining two datasets: Open ISNI for Institutions, available at <http://isni.ringgold.com/>, which provides metadata for institutions identified by ISNI. The dataset of institutions used by ORCID for disambiguation,...

Uploaded on August 24, 2017

1 more version(s) exist for this record

View

August 22, 2017 (v2) Dataset Open Access

Supplementary Data: Status of the scalar singlet dark matter model (arXiv:1705.07931)

The GAMBIT Collaboration

Supplementary Data Status of the scalar singlet dark matter model arXiv:1705.07931 The files in this record contain data for the scalar singlet dark matter model considered in the GAMBIT "Round 1" scalar singlet paper. The files consist of Three YAML files, each corresponding to a different...

Uploaded on August 22, 2017

1 more version(s) exist for this record

View

August 15, 2017 (v2) Dataset Open Access

Supplementary Data: A global fit of the MSSM with GAMBIT (arXiv:1705.07917)

The GAMBIT Collaboration

Supplementary Data A global fit of the MSSM with GAMBIT arXiv:1705.07917 The files in this record contain data for the MSSM7 model considered in the GAMBIT "Round 1" weak-scale SUSY paper. The files consist of A number of YAML files corresponding to different sets of sampling parameters and/or...

Uploaded on August 15, 2017

1 more version(s) exist for this record

View

Zenodo now supports DOI versioning!

[Read more](#) about it, in our newest blog post.



Using GitHub?

Just [Log in](#) with your GitHub account and [click here](#) to start preserving your repositories.



Zenodo in a nutshell

- **Research. Shared.** — all research outputs from across all fields of research are welcome! Sciences and Humanities, really!
- **Citeable. Discoverable.** — uploads gets a Digital Object Identifier (DOI) to make them easily and uniquely citeable.
- **Communities** — create and curate your own community for a workshop, project, department, journal, into which you can accept or reject uploads. Your own complete digital repository!
- **Funding** — identify grants, integrated in reporting lines for research funded by the European Commission via OpenAIRE.
- **Flexible licensing** — because not everything is under Creative Commons.
- **Safe** — your research output is stored safely for the future in the same cloud infrastructure as CERN's own LHC research data.

journal article / supplementary material

Research Data Policy Types

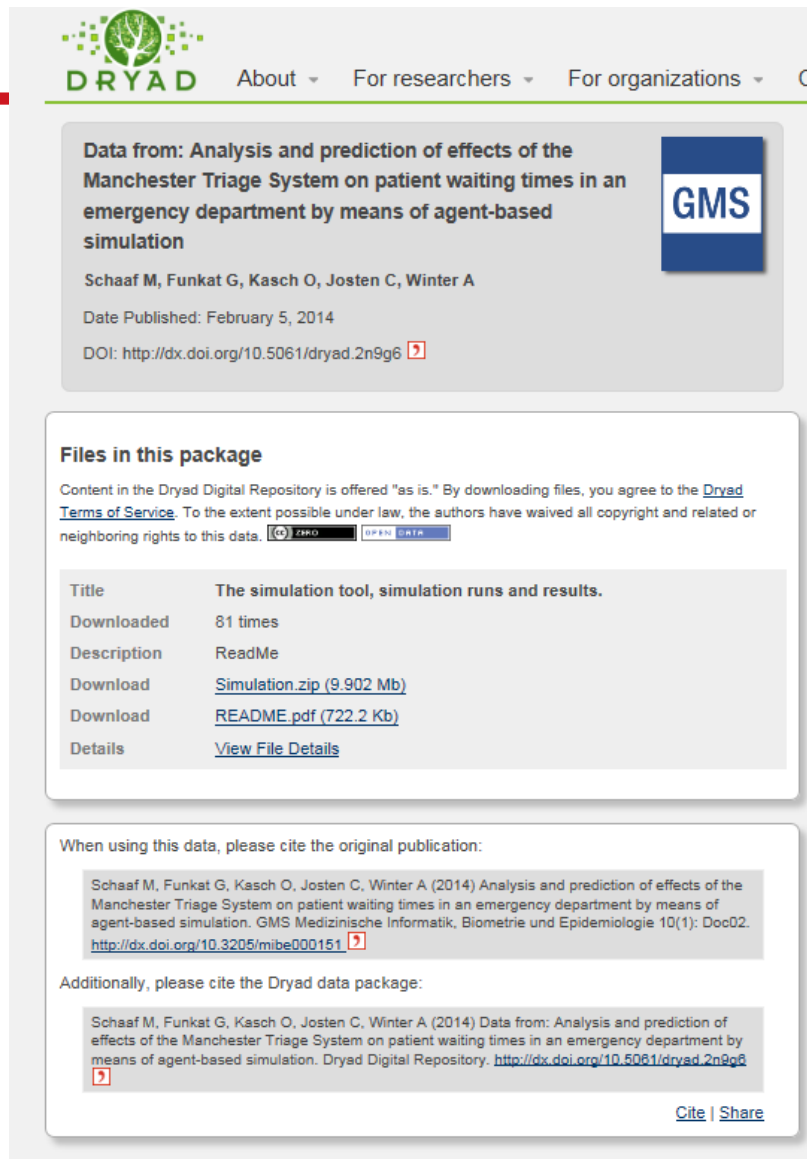
The 4 types of research data policy are provided in full below. These policy texts are templates and journals may make minor changes to fit with their journal scope and website style. See FAQs for a summary of the requirements of each policy type.

Springer Nature has made the research data policy texts, unless otherwise stated, available for reuse by the research data community under a [Creative Commons attribution license](#) .

Here are examples of journals that support each policy type:

Policy Type	Policy summary	Example Journal
Type 1	Data sharing and data citation is encouraged	<i>Photosynthesis Research</i> (click, ' Instructions for Authors ')
Type 2	Data sharing and evidence of data sharing encouraged	<i>Plant and Soil</i> (click, ' Instructions for Authors ')
Type 3	Data sharing encouraged and statements of data availability required	<i>Palgrave Communications</i> (see Editorial policies)
Type 4	Data sharing, evidence of data sharing and peer review of data required	<i>Scientific Data</i> (see Data policies)

journal article / supplementary material



DRYAD About ▾ For researchers ▾ For organizations ▾ Co

Data from: Analysis and prediction of effects of the Manchester Triage System on patient waiting times in an emergency department by means of agent-based simulation


Schaaf M, Funkat G, Kasch O, Josten C, Winter A

Date Published: February 5, 2014

DOI: <http://dx.doi.org/10.5061/dryad.2n9g6>

GMS

Files in this package

Content in the Dryad Digital Repository is offered "as is." By downloading files, you agree to the [Dryad Terms of Service](#). To the extent possible under law, the authors have waived all copyright and related or neighboring rights to this data.  [OPEN DATA](#)

Title	The simulation tool, simulation runs and results.
Downloaded	81 times
Description	ReadMe
Download	Simulation.zip (9.902 Mb)
Download	README.pdf (722.2 Kb)
Details	View File Details

When using this data, please cite the original publication:

Schaaf M, Funkat G, Kasch O, Josten C, Winter A (2014) Analysis and prediction of effects of the Manchester Triage System on patient waiting times in an emergency department by means of agent-based simulation. *GMS Medizinische Informatik, Biometrie und Epidemiologie* 10(1): Doc02. <http://dx.doi.org/10.3205/mibe000151>

Additionally, please cite the Dryad data package:

Schaaf M, Funkat G, Kasch O, Josten C, Winter A (2014) Data from: Analysis and prediction of effects of the Manchester Triage System on patient waiting times in an emergency department by means of agent-based simulation. Dryad Digital Repository. <http://dx.doi.org/10.5061/dryad.2n9g6>

[Cite](#) | [Share](#)

- ▶ Cooperation of ZB MED with DRYAD within the open access portal german medical science GMS.
- ▶ ZB MED pay for data publication



Data paper in data journal

- ▶ Journals publishing data papers
- ▶ Data papers describe research data, e.g. the methods to generate the data
- ▶ Data papers provide a link to the research data (e.g. to a specialist repository)
- ▶ mostly hybrid journals, which publish normal articles and data papers

Data papers support the access and the citation of research data!

Data paper in data journal

ODjAR.org

[HOME](#) [ABOUT](#) [LOGIN](#) [REGISTER](#) [SEARCH](#) [CURRENT](#) [ARCHIVES](#) [ANNOUNCEMENTS](#) [MANUAL](#)

Home > **Vol 3 (2017)**

Open Data Journal for Agricultural Research



Agricultural research uses and produces many relevant data sets in studying agricultural systems across the globe, through its efforts in investigating conditions of global food (in)security at different spatial scales (from regional to national to continental). These data sets have a value to the specific research as these are analysed and investigated, leading to results and conclusions, that are published in peer-reviewed scientific journals or presented at scientific conferences. These data have a longer term value as a resource for the future than the specific research in which they are collected. Other researchers or experts can use these data in new analysis, meta-analysis, or different applications of modelling or statistical tools, leading to new insights for the future. The Open Data Journal for Agriculture Research (ODjAR) acts as a central hub for storing, curating and publishing the data sets as a resource for the future where publications and their authors get appropriate credit through citations and digital object identifiers for future reference.

Specialist (research data-) Repository

AgTrials The Global Agricultural Trial
Repository and Database



RESEARCH PROGRAM ON
Climate Change,
Agriculture and
Food Security



Home

About Us

Trial

Statistics

Contact Us

Sign In

Sign Up

Search Trials

Simple and Advanced Searches

Add New Trial

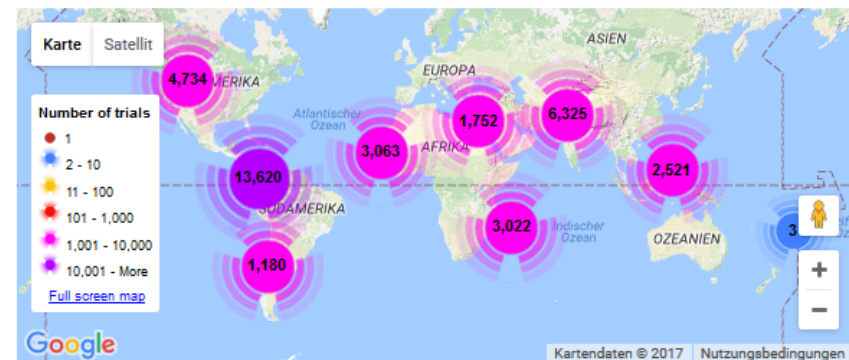
Upload your data to AgTrials

Upload Batch of Trials

Upload your data in batch mode

What is AgTrials?

Agtrials.org is an information portal developed by the CGIAR Research Program on Climate Change, Agriculture and Food Security (CCAFS) which provides access to a database on the performance of agricultural technologies at sites across the developing world. It builds on decades of evaluation trials, mostly of varieties, but includes any agricultural technology for developing world farmers.



What you can do

Share data and information on evaluations
of agricultural technology.

Acquire agricultural evaluation data sets for
your own research.

Explore the geographic dimensions of
agricultural evaluation.

Specialist (research data-) Repository

Life Science Repository by ZB MED

- ▶ Assurance for subsequent use
- ▶ Publication of „raw research data“ and together with a text publication („enhanced publication“)
- ▶ Open licence required to support further use
- ▶ Long term preservation (projected)

[Titel](#) [Hilfe](#)

Titel* [?](#)

[Urheberschaft](#)

Autor* [?](#)

[+](#) [-](#) [↑](#) [↓](#)

[Dateiupload](#)

Medium* [?](#)

CopyrightJahr* [?](#)

Lizenz* [?](#)

Embargo [?](#)

[Erschließung](#)

Beschreibung* [?](#)

Life Science Repository: Data Policy

- ▶ **Property right** of the owner of the research data
- ▶ **Licence:** open licence required
- ▶ Description of the research data through **metadata** (mandatory and optional)
- ▶ **Embargo:** two years
- ▶ **Digital Object Identifier DOI**
- ▶ **Privacy:** anonymizing of research data required
- ▶ **Long term preservation:** bitstream preservation, long term projected
- ▶ ZB MED provides **technical infrastructure**
(hosted by hochschulbibliothekszenrum Nordrhein-Westfalen)
- ▶ **Quality management (ZB MED):** documentation/metadata, structured data, possibility of technical use, copy right, privacy,

Life Science Repository: metadata mandatory and optional (but recommended)

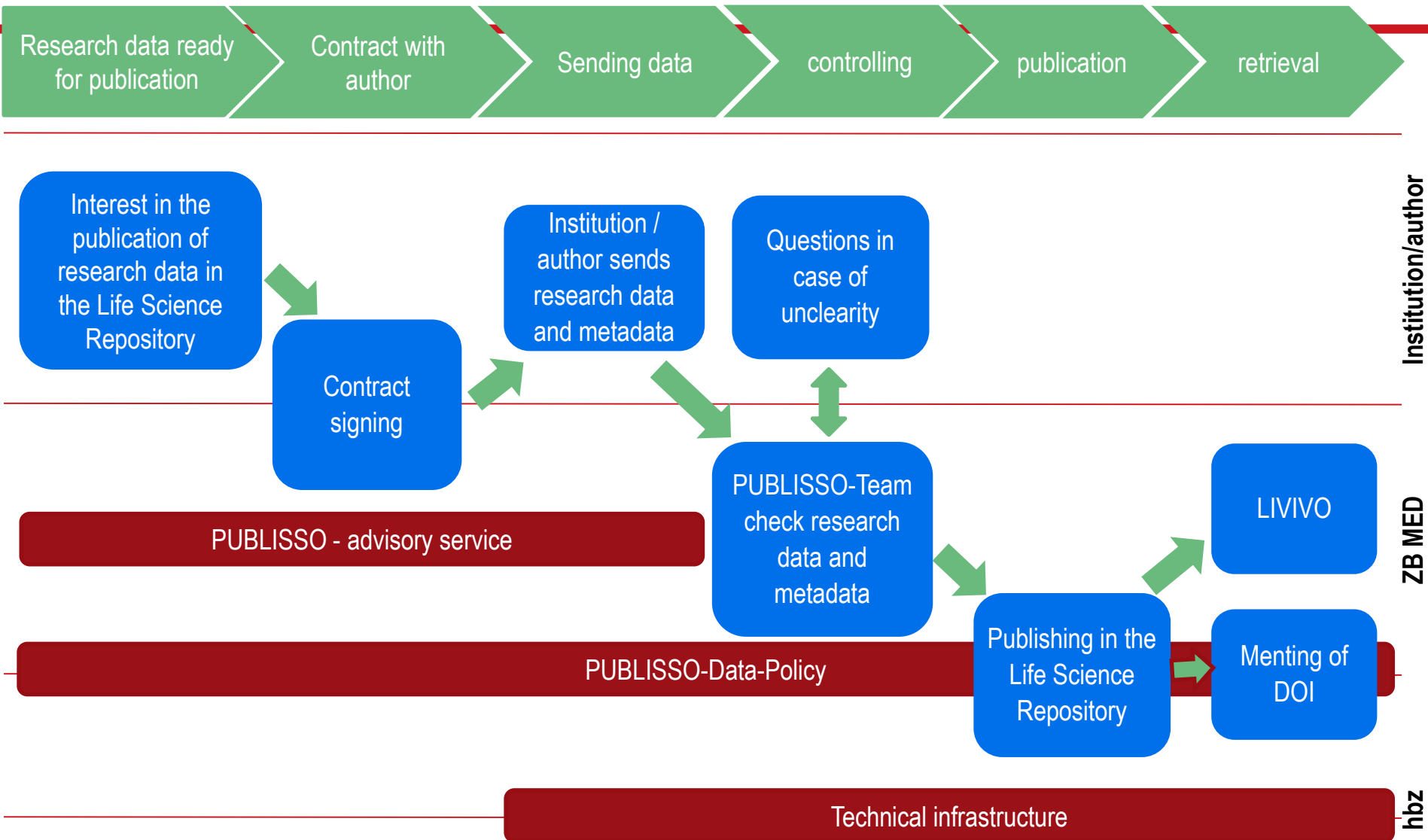
mandatory

- ▶ author (ORCID optional)
- ▶ affiliation
- ▶ data file
- ▶ format (csv, jpeg, etc.)
- ▶ media type (image, video, dataset, etc.)
- ▶ size
- ▶ embargo (yes/no)
- ▶ licence (default: ODbL)
- ▶ abstract
- ▶ discipline
- ▶ DDC-classification

optional/recommended

- ▶ funder
- ▶ key words (GND, AGROVOC)
- ▶ data collecting (sample, measurement, etc.)
- ▶ time of collecting
- ▶ place
- ▶ used publications
- ▶ associated publications
- ▶ version

Workflow: publication of research data in the Life Science Repository



Thank you!

Birte Lindstädt

Open-Access-Publishing and
Advisory Services

Research Data Management

Gleueler Straße 60
50931 Köln

lindstaedt@zbmed.de

