




*For the future
of agriculture*



*We are taking a scientific approach to
working on the efficient, environmentally
friendly agriculture of the future*

*Fact-based, independent
and reliable*



Our mission is the transfer of technology and knowledge. As a non-profit organisation, the **Kuratorium für Technik und Bauwesen in der Landwirtschaft e.V. (KTBL)** promotes future-oriented agriculture by offering advice to all the stakeholders involved, and providing information and facts. All this is always based on the latest scientific findings and with reference to practical application.

We act independently of political and economic interests and are solely committed to promoting consumer-oriented, socially and environmentally compatible land management, animal welfare, and environmentally friendly animal husbandry, along with supporting rural areas. The voluntary work and expertise of our members, and in particular the approximately 350 experts who work in our committees, represent the basis of KTBL's activities. The President of KTBL is Professor Eberhard Hartung, Director of the Institute of Agricultural Process Engineering at the Christian-Albrechts-University of Kiel. Managing Director Dr Martin Kunisch is in charge of the office.



As diverse as modern agriculture



KTBL functions as a network of experts. It collects data and facts that can be used, for example, to calculate costs or to evaluate measures relating to land management, animal husbandry, and energy issues. KTBL also makes contributions to rural development that go beyond the scope of these fields. Furthermore, we participate in the preparatio-

no regulations and standards, and assist other institutions with their committee work. The target groups for the individual services are farmers, including gardeners, winegrowers and the energy sector, administrators, experts, and industry as well as research and teaching. The findings also serve as advice and are used for training and further education.

The information is processed in line with the target group, and incorporated into the preparation of statements for the Federal Ministry of Food and Agriculture (Bundesministerium für Ernährung und Landwirtschaft, BMEL), scientific publications, conference contributions, trade fair appearances and practice-focused Internet applications.

KTBL is institutionally supported by the BMEL. In addition, we work on projects supported by third-party funds from a wide range of donors.

As part of its strategic process, KTBL has identified nine specialisations for its work covering all areas of agriculture.

Each of these specialisations is headed up by a consortium of up to 12 experts working on a voluntary basis. They select topics, launch projects, set priorities and develop interdisciplinary concepts. Working groups are formed to work on a specific topic.

In addition to perennially important questions of economic efficiency and the environmental compatibility of individual construction and investment measures, highly topical issues such as the conflict between environmental protection and animal welfare are on KTBL's agenda.

In order to promote the objective transfer of knowledge, for example in the animal welfare debate, KTBL has organised several expert meetings and conferences and published the results of construction competitions as exemplary solutions for sustainable, animal-friendly stables. At the same time, we contribute to the compatibility of requirements for animal welfare, emission protection and business operations providing scientific support to legislative procedures, both through the main office and through voluntary work, for example with TA Luft (German air pollution regulation).



*We combine knowledge
from all areas
relevant to agriculture
in our consortia*

Business management

Emissions and climate protection

Energy

Horticulture

Animal husbandry

Organic farming

Crop production

Site development and emission control

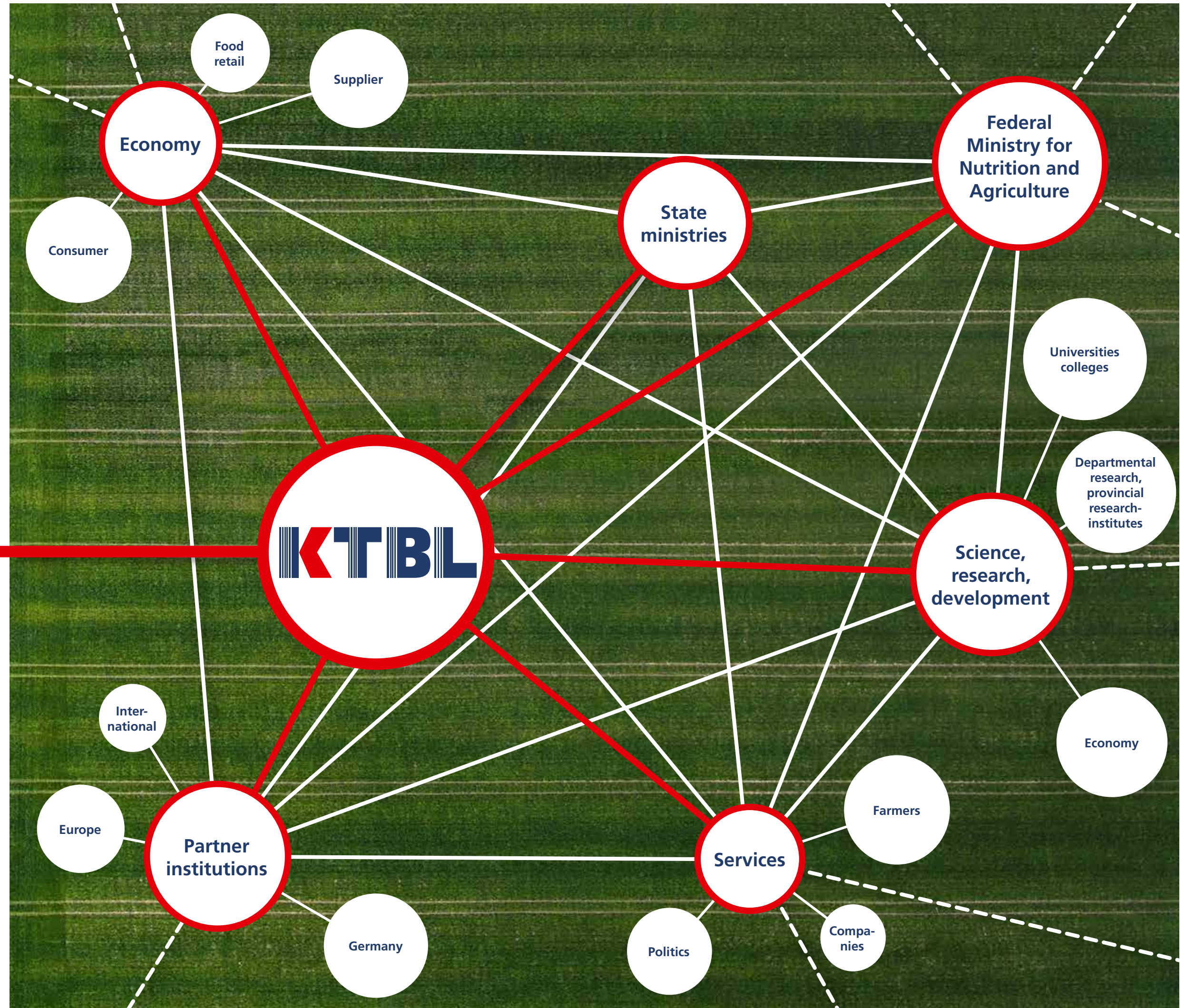
Knowledge technologies

*In our eyes, science and practical relevance
are not a contradiction*

The members both of the association and the consortia, along with the consortia's working groups, come from science and business, politics, consulting and agriculture. They have a wide variety of professional backgrounds and, thanks to the diversity of their expertise, have an overview of modern agriculture as a whole. In their work for KTBL, they act independently and are solely committed to the association's objective of promoting consumer-oriented, socially responsible and environmentally friendly farming, animal welfare, and environmentally compatible animal husbandry and supporting rural areas.

In each of the nine work specialisms, which are supervised by a consortium, around 50 working groups consisting of members and volunteer experts look at current issues and topics. The work programme is reviewed annually on the basis of practical requirements, politics and new scientific and economic developments. KTBL's office in Darmstadt provides the working groups with expert support for their voluntary work. The findings of the working groups are published in the appropriate form and are thus available as a sound basis for decisions and evaluations taken by the general public.

Thanks to our broad, diversified network, we are able to find the right contact person for every topic. This benefits decision-makers in politics as well as practitioners who use our online applications and publications. Consulting, administration and science can always find competent and reliable contacts at KTBL. The experts themselves also appreciate the independent, interdisciplinary and practice-oriented exchange of ideas!



*Balanced information -
based on science and
presented comprehensibly*



The findings of our work can easily be accessed via our website. As a result, extensive data collections form the basis of our practical, free Internet applications for all the topics we work on.

Our publications - in print or readable online - provide comprehensive information on topics that are currently of importance. Depending on the matter in question, they range from a concise and quickly understandable worksheet to detailed documentation. Conferences, for example on „Current legal framework conditions in animal husbandry“, and trade fair appearances facilitate direct contact with our experts and our office employees.

Contests are held to draw public attention to innovative solutions for agriculture. Last but not least, we keep all interested parties informed via social media. The entire range of services can be accessed swiftly via the website.

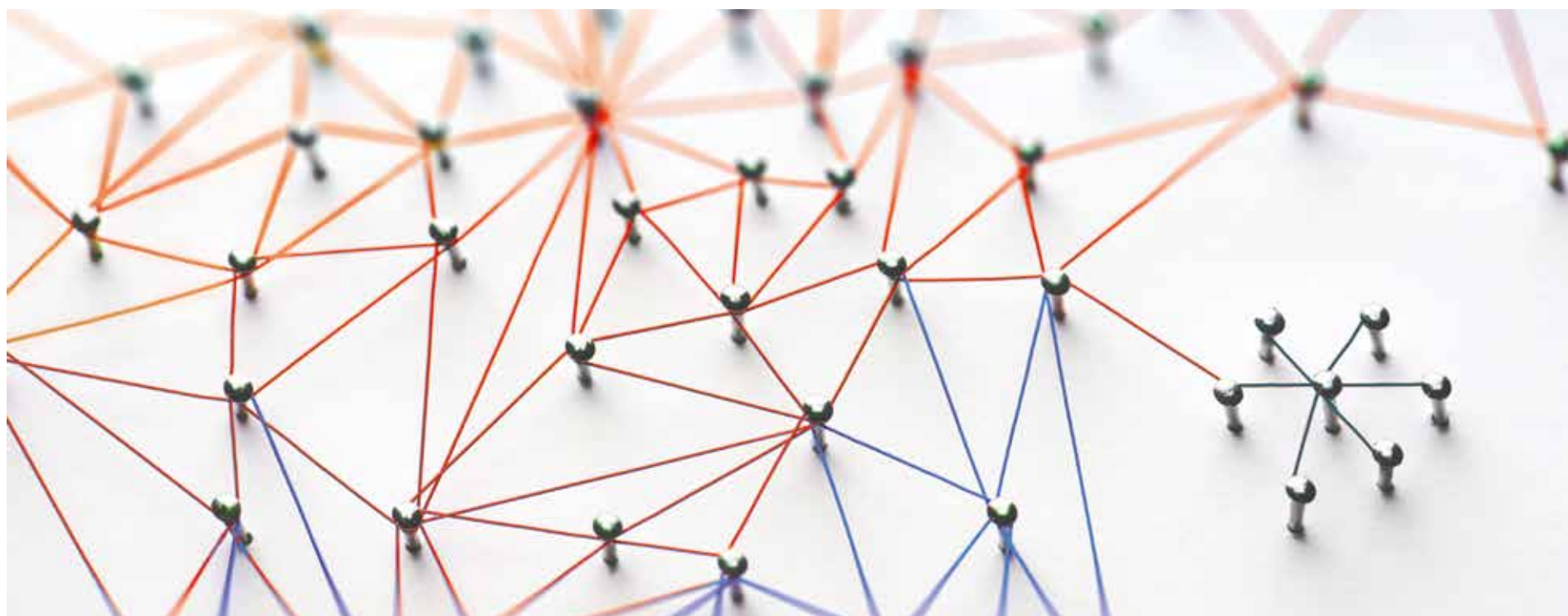
To promote scientific exchange, KTBL is co-editor of the scientific journal „LAND-TECHNIK - Agricultural Engineering“. Agricultural technology findings from applied research are published here. LANDTECHNIK is peer-reviewed and is published in German and English. Since 2014, the journal has been freely available online in „open access“ format to anyone interested.



All publications
as well as further

→ information can be found at
www.ktbl.de

*Commitment,
that pays off*



Collaboration with KTBL makes it possible to help shaping the agriculture of the future in a consumer-oriented, socially acceptable and environmentally friendly manner. But that's not all: it broadens the horizon of experience and thus our own competence. It also opens up a wide range of networking opportunities with our members and other experts as well as stakeholders from all areas of agriculture, industry and politics.

The possibilities of collaboration are manifold: as a member of the association, you can vote for the president and thus actively determine the main topics and strategy of KTBL. As an expert working on a voluntary

basis, you share your knowledge for the benefit of all the important stakeholders in your field, network with other experts, ensure that the findings of your research and development are put into practice and find a platform for discussing new insights.

Members and experts are competently supported in their voluntary work by the Darmstadt-based office, where about 80 colleagues work in various fields. The office looks after the consortia and working groups, prepares the knowledge from research, development and practice in a timely manner and ensures that it is made available as quickly as possible.

Our network goes even further: it strives

for strategic partnerships with other institutions within Germany and abroad in order to exploit synergies and avoid work being duplicated. The institutional and technical requirements for a joint data provision are examined and the possibilities of electronic data exchange are taken into account.

In addition, all opportunities to cooperate with institutions from research, science, consulting and industry are taken, whether at state, national or EU level.



KTBL

Kuratorium für Technik und Bauwesen
in der Landwirtschaft e.V.

Bartningstraße 49

64289 Darmstadt

Tel.: +49 (0) 6151 7001-0

E-Mail: ktbl@ktbl.de

www.ktbl.de

www.twitter.com → KTBL_Service

www.facebook.com → KTBL.Darmstadt

www.youtube.com → KTBL